

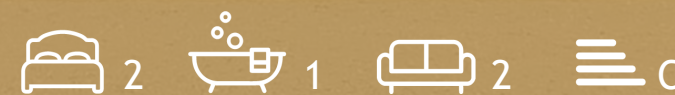


MORGAN ASSOCIATES

ESTATE & LETTINGS AGENCY



13, Station Road,
Gloucester GL1 1EN
Price Guide £195,000



13, Station Road,

Gloucester GL1 1EN

A beautifully newly refurbished terraced property off the vibrant Rainbow Square in Gloucester.

Full Description

The ground floor comprises two spacious reception rooms which lead into a newly fitted kitchen, and an access door into a suntrap of a garden!

Upstairs we find a very modern and stylish bathroom with separate bath and large shower, again, all brand-new fittings.

Two double bedrooms complete the top floor.

The house is warmed by Gas Central Heating, there also the option of plentiful permit parking directly outside.

Further Information

Tenure: Freehold

Services: Mains gas, electricity, water and drainage. Gas central heating.

Local authority: Gloucester City Council.

Council Tax Band: A





Floor Plan

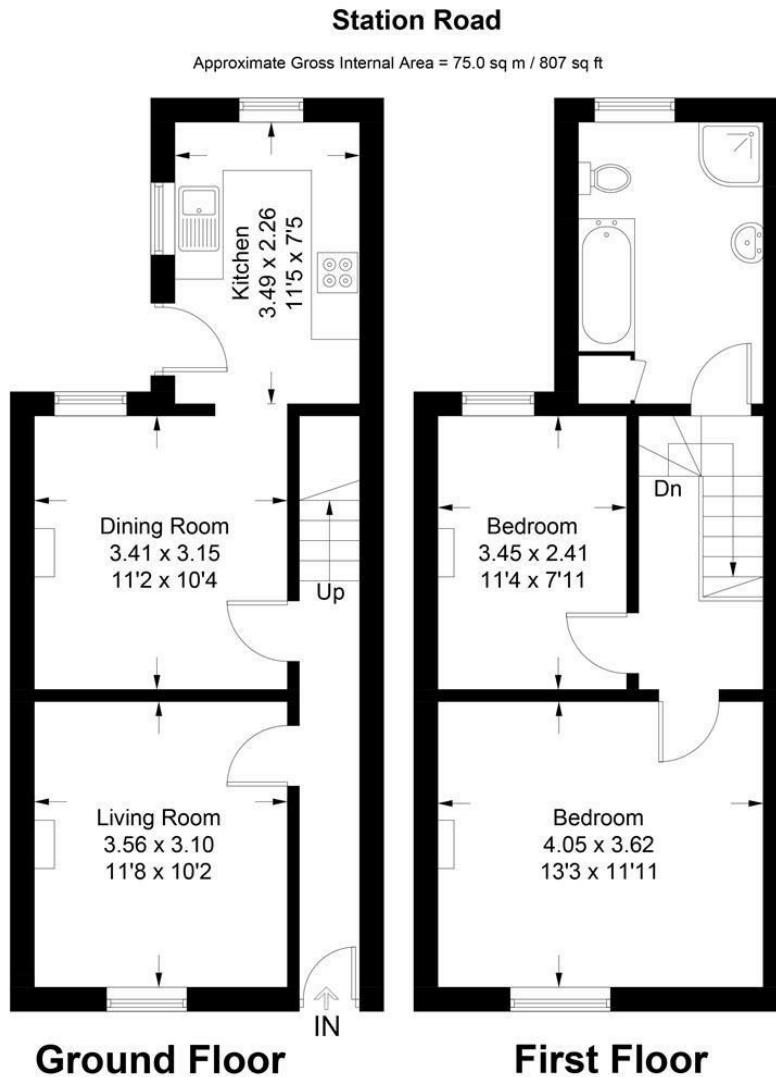
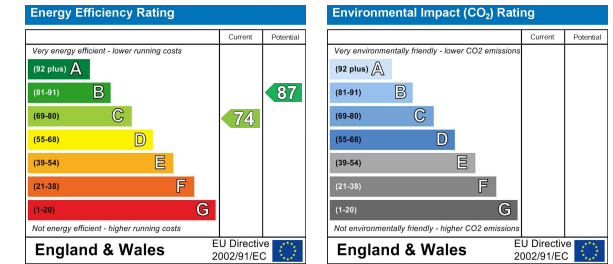


Illustration for identification purposes only, measurements are approximate, not to scale. Fourlabs.co © (ID1210257)

These particulars, whilst believed to be accurate are set out as a general outline only for guidance and do not constitute any part of an offer or contract. Intending purchasers should not rely on them as statements of representation of fact, but must satisfy themselves by inspection or otherwise as to their accuracy. No person in this firm's employment has the authority to make or give any representation or warranty in respect of the property.

Energy Efficiency Graph



Area Map



Viewing

Please contact us on 01242 514 285 if you wish to arrange a viewing appointment for this property or require further information.

Rotunda Buildings Montpellier Exchange
Cheltenham
Gloucestershire
GL50 1SJ

T. 01242 514 285
E. sales@morgan-associates.co.uk
W. www.morgan-associates.co.uk